

# MONTHLY MEMBERSHIP PROGRESS REPORT

LOCATION INDIA

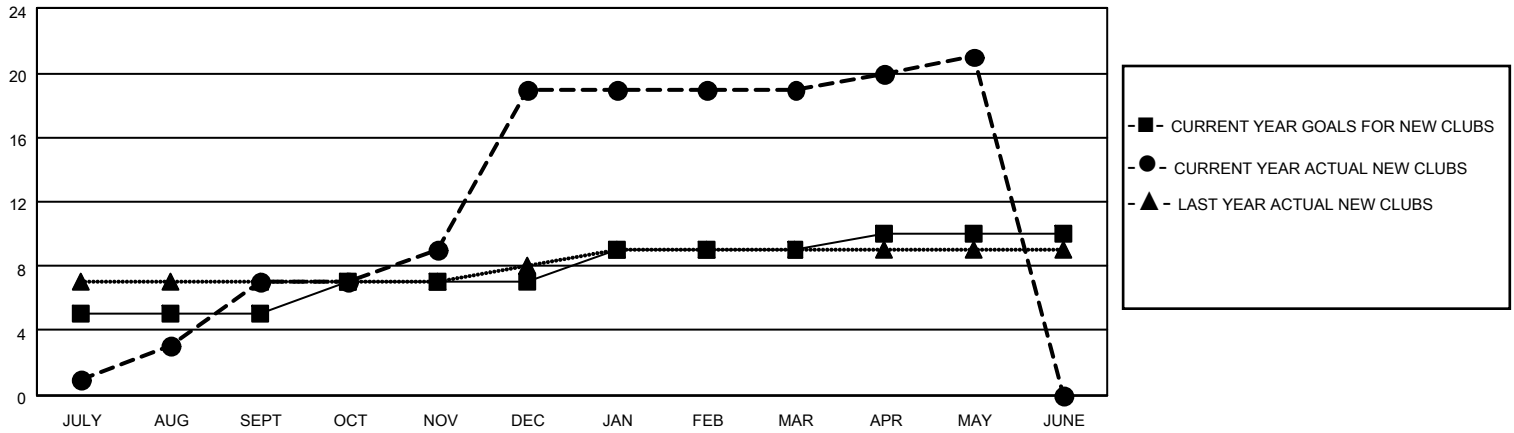
District 322C1

Results as of: 5/31/2021

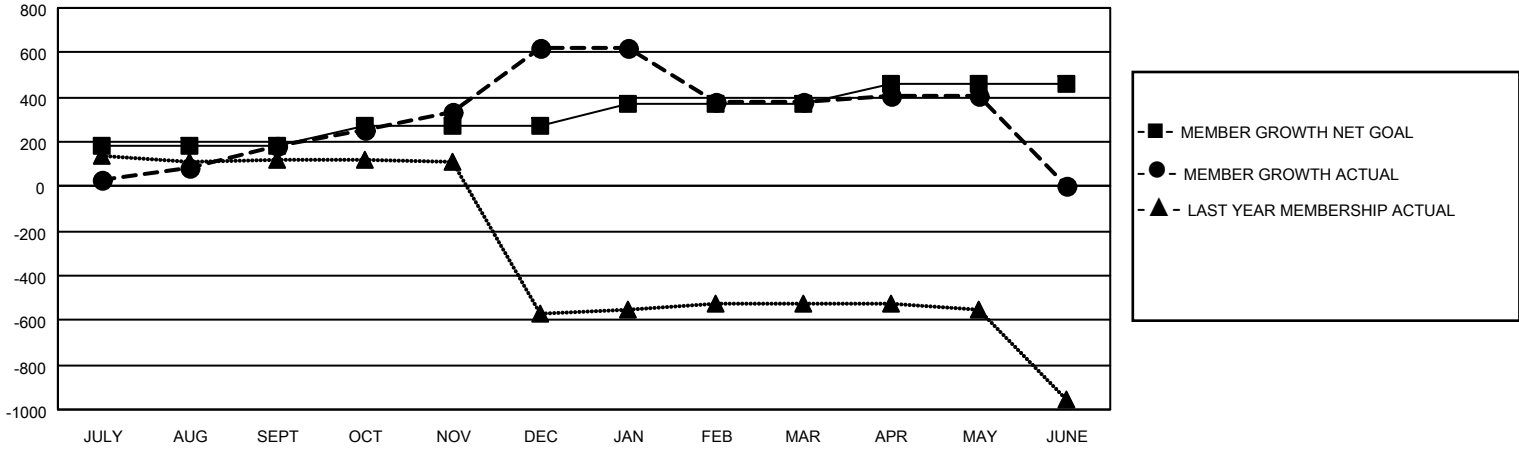
Clubs			
RESULTS FOR 2020-2021			
QUARTER	NEW CLUB GOAL	NEW CLUBS	DROPPED CLUBS
JULY/AUG/SEPT	5	7	0
OCT/NOV/DEC	2	12	0
JAN/FEB/MAR	2	0	16
APR/MAY/JUNE	1	2	0

Members			
RESULTS FOR 2020-2021			
QUARTER	MEMBER GROWTH NET GOAL	MEMBER GROWTH ACTUAL	DROPPED MEMBERS ACTUAL (including transfers)
JULY/AUG/SEPT	179	252	57
OCT/NOV/DEC	93	588	139
JAN/FEB/MAR	102	29	268
APR/MAY/JUNE	88	57	33

**GOALS AND ACTUAL NEW CLUBS CUMULATIVE**



**GOALS AND ACTUAL MEMBERS CUMULATIVE**



**DROPPED CLUBS: 16**

**79 CLUBS OF 136 ADDED 1 OR MORE NEW MEMBERS**

**GENDER DISTRIBUTION**

MALE 2,619 (75.76%)  
FEMALE 838 (24.24%)

**DROPPED MEMBERS**

DECEASED	29
CLUB CANCELLED	247
OTHER	221
<b>TOTAL</b>	<b>497</b>

[CLICK HERE FOR CUMULATIVE MEMBERSHIP DATA](#)

TOTAL FAMILY UNIT MEMBERS	1,921
FAMILY MEMBERS PAYING HALF DUES	1,159